

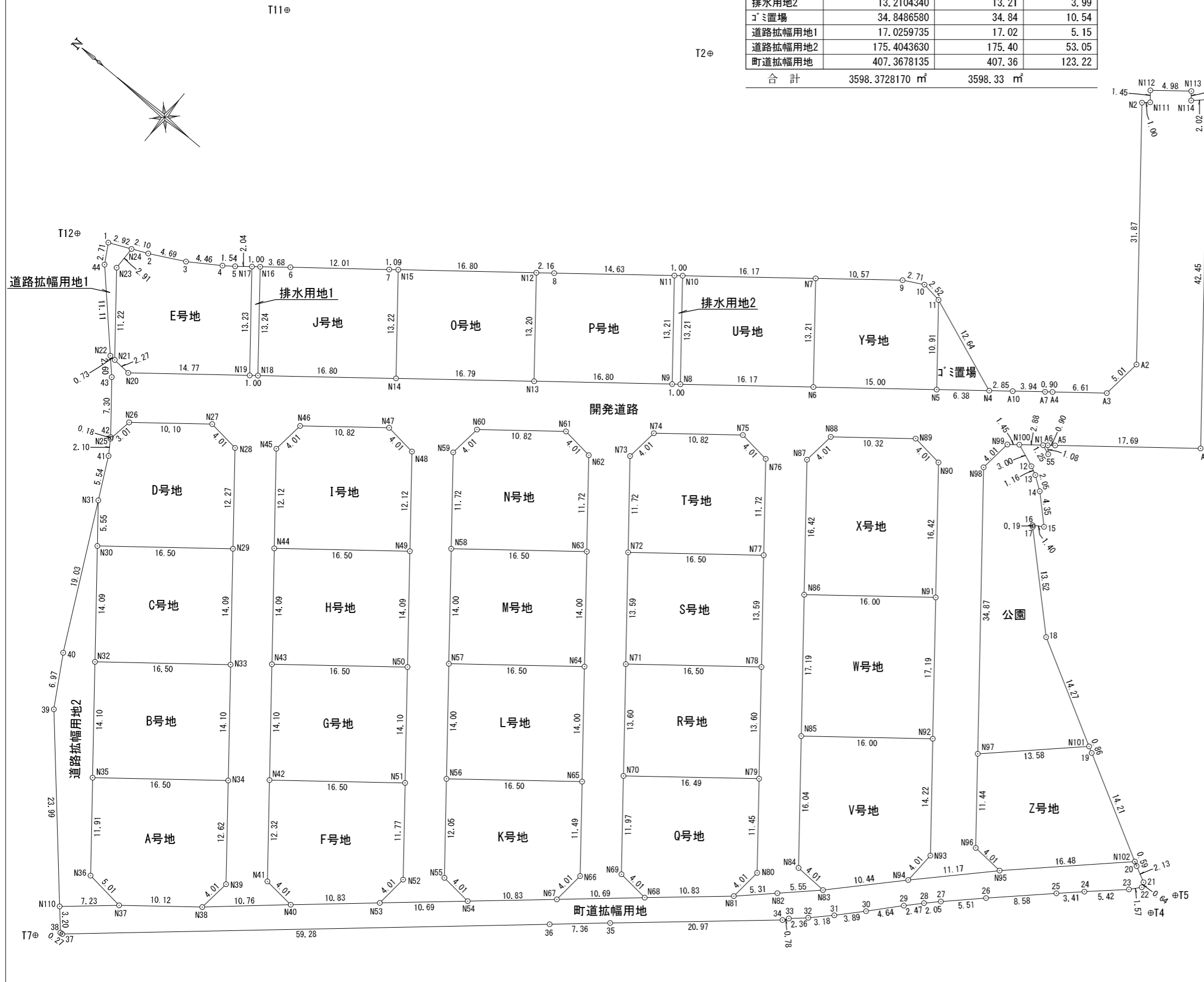
座標面積一覧表 (公共用地)

地番	座標面積	地積	坪数
開発道路	2632.8585260	2632.85	796.43
公園	304.4142620	304.41	92.08
排水用地1	13.2427870	13.24	4.00
排水用地2	13.2104340	13.21	3.99
ゴミ置場	34.8486580	34.84	10.54
道路拡幅用地1	17.0259735	17.02	5.15
道路拡幅用地2	175.4043630	175.40	53.05
町道拡幅用地	407.3678135	407.36	123.22
合計	3598.3728170 m <sup>2</sup>	3598.33 m <sup>2</sup>	

座標面積一覧表 (宅地用地)

地番	座標面積	地積	坪数
A号地	244.8178530	244.81	74.05
B号地	232.6577930	232.65	70.37
C号地	232.6474500	232.64	70.37
D号地	234.6771405	234.67	70.98
E号地	226.2346170	226.23	68.43
F号地	237.5694825	237.56	71.86
G号地	232.6577930	232.65	70.37
H号地	232.6474500	232.64	70.37
I号地	238.7936425	238.79	72.23
J号地	222.4767125	222.47	67.29
K号地	233.0045610	233.00	70.48
L号地	231.0034160	231.00	69.87
M号地	231.0034160	231.00	69.87
N号地	232.1994890	232.19	70.23
O号地	222.0564660	222.05	67.17
P号地	221.8902270	221.89	67.12
Q号地	232.0493420	232.04	70.19
R号地	224.4089800	224.40	67.88
S号地	224.3962510	224.39	67.87
T号地	232.1988850	232.19	70.23
U号地	213.7707125	213.77	64.66
V号地	279.7520325	279.75	84.62
W号地	275.2020115	275.20	83.24
X号地	300.1907775	300.19	90.80
Y号地	195.1950690	195.19	59.04
Z号地	232.7243685	232.72	70.39
合計	6116.2259385 m <sup>2</sup>	6116.08 m <sup>2</sup>	

合計面積 9714.41 m<sup>2</sup>



T3

座標リスト

点名	X	Y
T2	138631.891	39567.568
T3	138544.406	39566.559
T4	138523.622	39521.914
T5	138522.704	39525.476
T7	138625.803	39432.634
T11	138674.704	39538.540
T12	138676.778	39501.329
T13	138522.690	39566.720

図面名	求積図
所在	綾歌郡綾川町滝宮、綾歌郡綾川町萱原
縮尺	1/500
測図年月日	令和6年9月1日
作成者	高松市伏石町2174番地15 行政書士 松澤人史

座標求積表

Table with 4 columns: 地番, A号地, Xn, Yn, (Xn+1-Xn-1)Yn. Rows include N35, N34, N39, N38, N37, N36 and summary rows for 倍面積, 面積, 地積, 坪数.

座標求積表

Table with 4 columns: 地番, B号地, Xn, Yn, (Xn+1-Xn-1)Yn. Rows include N32, N33, N34, N35 and summary rows for 倍面積, 面積, 地積, 坪数.

座標求積表

Table with 4 columns: 地番, C号地, Xn, Yn, (Xn+1-Xn-1)Yn. Rows include N30, N29, N33, N32 and summary rows for 倍面積, 面積, 地積, 坪数.

座標求積表

Table with 4 columns: 地番, D号地, Xn, Yn, (Xn+1-Xn-1)Yn. Rows include N25, N26, N27, N28, N29, N30, N31, 41 and summary rows for 倍面積, 面積, 地積, 坪数.

座標求積表

Table with 4 columns: 地番, E号地, Xn, Yn, (Xn+1-Xn-1)Yn. Rows include N24, 2, 3, 4, 5, N17, N19, N20, N21, N23 and summary rows for 倍面積, 面積, 地積, 坪数.

座標求積表

Table with 4 columns: 地番, F号地, Xn, Yn, (Xn+1-Xn-1)Yn. Rows include N42, N51, N52, N53, N40, N41 and summary rows for 倍面積, 面積, 地積, 坪数.

座標求積表

Table with 4 columns: 地番, G号地, Xn, Yn, (Xn+1-Xn-1)Yn. Rows include N43, N50, N51, N42 and summary rows for 倍面積, 面積, 地積, 坪数.

座標求積表

Table with 4 columns: 地番, H号地, Xn, Yn, (Xn+1-Xn-1)Yn. Rows include N44, N49, N50, N43 and summary rows for 倍面積, 面積, 地積, 坪数.

座標求積表

Table with 4 columns: 地番, I号地, Xn, Yn, (Xn+1-Xn-1)Yn. Rows include N46, N47, N48, N49, N44, N45 and summary rows for 倍面積, 面積, 地積, 坪数.

座標求積表

Table with 4 columns: 地番, J号地, Xn, Yn, (Xn+1-Xn-1)Yn. Rows include N16, 6, 7, N15, N14, N18 and summary rows for 倍面積, 面積, 地積, 坪数.

座標求積表

Table with 4 columns: 地番, K号地, Xn, Yn, (Xn+1-Xn-1)Yn. Rows include N56, N65, N66, N67, N54, N55 and summary rows for 倍面積, 面積, 地積, 坪数.

座標求積表

Table with 4 columns: 地番, L号地, Xn, Yn, (Xn+1-Xn-1)Yn. Rows include N57, N64, N65, N56 and summary rows for 倍面積, 面積, 地積, 坪数.

座標求積表

Table with 4 columns: 地番, M号地, Xn, Yn, (Xn+1-Xn-1)Yn. Rows include N58, N63, N64, N57 and summary rows for 倍面積, 面積, 地積, 坪数.

座標求積表

Table with 4 columns: 地番, N号地, Xn, Yn, (Xn+1-Xn-1)Yn. Rows include N60, N61, N62, N63, N58, N59 and summary rows for 倍面積, 面積, 地積, 坪数.

座標求積表

Table with 4 columns: 地番, O号地, Xn, Yn, (Xn+1-Xn-1)Yn. Rows include N15, N12, N13, N14 and summary rows for 倍面積, 面積, 地積, 坪数.

座標求積表

Table with 4 columns: 地番, P号地, Xn, Yn, (Xn+1-Xn-1)Yn. Rows include N12, 8, N11, N9, N13 and summary rows for 倍面積, 面積, 地積, 坪数.

座標求積表

Table with 4 columns: 地番, Q号地, Xn, Yn, (Xn+1-Xn-1)Yn. Rows include N70, N79, N80, N81, N68, N69 and summary rows for 倍面積, 面積, 地積, 坪数.

座標求積表

Table with 4 columns: 地番, R号地, Xn, Yn, (Xn+1-Xn-1)Yn. Rows include N71, N78, N79, N70 and summary rows for 倍面積, 面積, 地積, 坪数.

座標求積表

Table with 4 columns: 地番, S号地, Xn, Yn, (Xn+1-Xn-1)Yn. Rows include N72, N77, N78, N71 and summary rows for 倍面積, 面積, 地積, 坪数.

Table with 2 columns: 図面名, 所在, 測図年月日, 作成者. Content includes 求積表 1, 綾歌郡綾川町滝宮、綾歌郡綾川町萱原, 令和6年9月1日, 高松市伏石町2174番地15 行政書士 松澤人史.



地番点	開発道路		
	$X_n$	$Y_n$	$(X_{n+1}-X_n) \cdot Y_n$
N22	138664.137	39492.497	42099.001802
N21	138663.404	39492.449	-118635.316796
N20	138661.133	39492.300	-544440.847800
N19	138649.618	39501.564	-485632.227816
N18	138648.839	39502.191	-547855.886979
N14	138635.749	39512.722	-1034403.549238
N13	138622.660	39523.253	-1034679.240287
N9	138609.570	39533.784	-548294.050296
N8	138608.791	39534.411	-529128.556824
N6	138596.186	39544.553	-960655.826029
N5	138584.498	39553.956	-659127.122784
N4	138579.522	39557.960	-284777.754040
A10	138577.299	39559.748	-209547.985156
A7	138574.225	39562.221	-149426.508717
A4	138573.522	39562.787	-231600.555098
A3	138568.371	39566.931	-225175.404321
A2	138567.831	39571.912	769277.969280
N2	138587.811	39596.746	761683.006056
N111	138587.067	39597.416	6850.352968
N112	138587.984	39598.550	-117092.912350
N113	138584.110	39601.680	-181969.719600
N114	138583.389	39600.788	-87002.931236
N3	138581.913	39602.177	-112266.743222
A8	138555.303	39569.102	-507355.025844
A5	138569.091	39558.009	573235.108419
A6	138569.794	39557.444	-1305.395652
55	138569.058	39556.650	17325.812700
N1	138570.232	39557.091	135483.036675
N100	138572.483	39555.280	133894.622800
N99	138573.617	39554.368	61942.140288
N98	138574.049	39550.381	-847446.013687
N97	138552.190	39523.212	-1147477.413996
N96	138545.016	39514.295	-441572.246625
N95	138541.015	39514.038	149363.063640
N94	138548.796	39506.019	301233.394875
N93	138548.640	39510.026	346068.317734
N92	138557.555	39521.106	778407.703776
N91	138568.336	39534.507	833387.407560
N90	138578.635	39547.307	564972.827802
N89	138582.622	39547.739	475917.491126
N88	138590.669	39541.264	335270.377456
N87	138591.101	39537.278	-390074.784748
N86	138580.803	39524.477	-833175.975160
N85	138570.021	39511.076	-823529.357068
N84	138559.960	39498.571	-555665.896828
N83	138555.953	39498.415	-157.993660
N82	138559.956	39494.562	309400.398708
N81	138563.787	39490.882	137191.324068
N80	138563.430	39494.876	269592.023576
N79	138570.613	39503.803	620525.737524
N78	138579.138	39514.400	673720.520000
N77	138587.663	39524.996	627419.786504
N76	138595.012	39534.131	448158.909016
N75	138598.999	39534.563	491177.410712
N74	138607.436	39527.775	350571.836475
N73	138607.868	39523.788	-273386.041596
N72	138600.519	39514.653	-627255.601722
N71	138591.994	39504.057	-673583.675907
N70	138583.468	39493.460	-633080.163800
N69	138575.964	39484.133	-453988.561234
N68	138571.970	39483.776	160304.130560
N67	138580.024	39476.740	304089.328220
N66	138579.673	39480.735	270600.957690
N65	138586.878	39489.690	631084.735890
N64	138595.654	39500.598	693314.496096
N63	138604.430	39511.506	637162.545756
N62	138611.780	39520.641	448005.986376
N61	138615.766	39521.073	491009.810952
N60	138624.204	39514.285	350452.193665
N59	138624.635	39510.298	-273332.241564
N58	138617.286	39501.163	-636956.253375
N57	138608.510	39490.255	-693132.955760
N56	138599.734	39479.347	-644697.736510
N55	138592.180	39469.958	-455799.074984
N54	138588.186	39469.608	160286.078088
N53	138596.241	39462.568	304059.086440
N52	138595.891	39466.562	277370.997736
N51	138603.269	39475.733	640177.962061
N50	138612.108	39486.719	698006.731763
N49	138620.946	39497.705	649302.772495
N48	138628.547	39507.151	457769.358637
N47	138632.533	39507.583	490842.211192
N46	138640.971	39500.795	350332.550855
N45	138641.402	39496.808	-283152.616552
N44	138633.802	39487.362	-649093.256556
N43	138624.964	39476.376	-697823.898552
N42	138616.125	39465.390	-653783.650740
N41	138608.398	39455.786	-462500.723492
N40	138604.403	39455.435	160228.521535
N38	138612.459	39448.302	300793.302750
N39	138612.028	39452.289	295221.478587
N34	138619.942	39462.126	661108.996878
N33	138628.781	39473.112	697766.200824
N29	138637.619	39484.098	652790.592234
N28	138645.314	39493.661	461325.454141
N27	138649.300	39494.093	468478.931166
N26	138657.176	39487.757	329327.893380
N25	138657.640	39484.783	22348.387178
42	138657.742	39484.938	185500.238724
43	138662.338	39490.612	252542.463740
	倍面積		5265.717052
	面積		2632.8585260
	地積		2632.85
	坪数		796.43

図面名	求積表3
所在	綾歌郡綾川町滝宮、綾歌郡綾川町萱原
測図年月日	令和6年9月1日
作成者	高松市伏石町2174番地15 行政書士 松澤人史